

Single Phase | Slow Speed

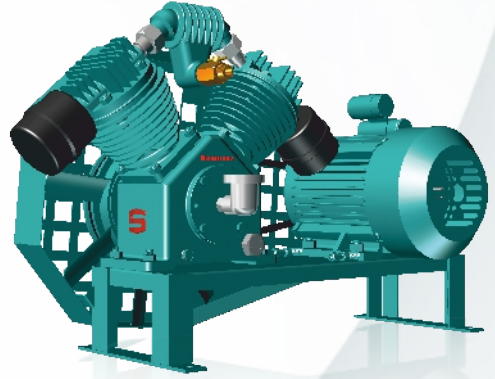
# Borewell Belt Compressor Pumpset



► SBCS

\*Available in X, N series

| Parameters      | Range                                 |
|-----------------|---------------------------------------|
| Power Rating    | 1.5 - 2.0 hp & 5.0 hp                 |
| Head Range      | 30.5 - 122 m                          |
| Discharge Range | 16 - 130 lpm                          |
| Voltage         | 220 V (-15% to +6%)                   |
| Pipe Size       | Air Pipe - 12 mm<br>Del. Pipe - 25 mm |



## SALIENT FEATURES

- Available in single and double cylinder
- Easy installation and maintenance
- Dynamic balancing of rotors ensure vibration free
- Robust in construction with standing overload
- Requires no priming
- It can be installed in more than one bore based on the water leaves
- Rigorous quality control checks at every stage of manufacturing to ensure high degree of reliability
- Easy belt alignment of compressor with the motor ensuring higher efficient and close to zero maintenance

## APPLICATIONS



Domestic



Flood irrigation



Low yield borewell



Agriculture

**SAMUDRA PUMPS (INDIA) PVT LTD**

Registered office: 1st Floor, Door No.737/2, Sai Aashrya, Puliyakulam Road, Coimbatore - 641 045, Tamilnadu, India

E-Mail: [info@samudrapumps.com](mailto:info@samudrapumps.com) | +91 422 498 2255

In View of continuous developments, the given information / descriptions / specifications are subject to change without prior notice