

Single Phase | High Speed | CI Body

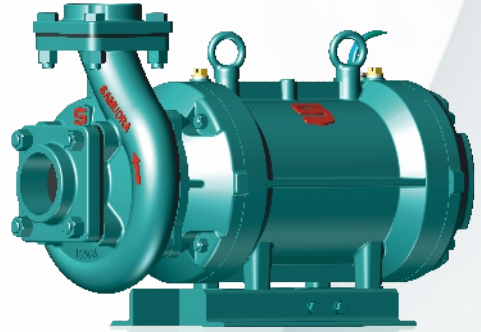
Openwell Submersible Monobloc Pumpset



► SSSM

*Available in **X.N** series

Parameters	Range
Power Rating	1.5 - 5.0 hp
Head Range	6- 42 m
Discharge Range	14- 950 lpm
Voltage	230 V (-15% to +6%)
Speed	2900 rpm



SALIENT FEATURES

- Energy efficient motors and pumps
- Wide operating voltage brand
- Robust design for better rigidity
- Increased water volume for better cooling
- Superior construction for easy installation and easy serviceability
- Optimized diaphragm design
- Three layer protection to avoid sand entry into motor
- Increased life with high grade cast iron components - FG 260
- Heavy duty water lubricated journal and thrust bearing for long trouble free operation

APPLICATIONS



Sprinkler, Drip and lift Irrigation



Water supply in apartments & buildings



Pumping watering from Open well, river and canal



Fountains & gardening

SAMUDRA PUMPS (INDIA) PVT LTD

Registered office: 1st Floor, Door No.737/2, Sai Aashrya, Puliyakulam Road, Coimbatore - 641 045, Tamilnadu, India

E-Mail: info@samudrapumps.com | +91 422 498 2255

In View of continuous developments, the given information / descriptions / specifications are subject to change without prior notice