

Single Phase | High Speed | CI Body

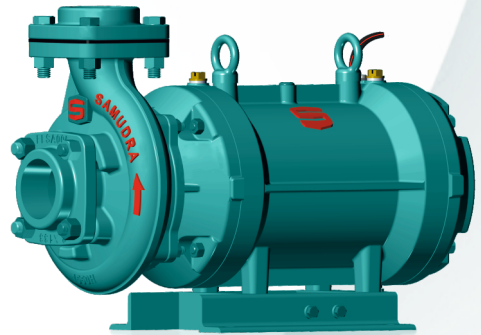
# Openwell Submersible Monobloc Pumpset



► SSSM

\*Available in **X, N** series

Parameters	Range
Power Rating	1.5 - 5.0 hp
Head Range	6- 42 m
Discharge Range	14- 950 lpm
Voltage	230 V (-15% to +6%)
Speed	2900 rpm



## SALIENT FEATURES

- Energy efficient motors and pumps
- Wide operating voltage band
- Robust design for better rigidity
- Increased water volume for better cooling
- Superior construction for easy installation and easy serviceability
- Optimized diaphragm design
- Three layer protection to avoid sand entry into motor
- Increased life with high grade cast iron components - FG 260
- Heavy duty water lubricated journal and thrust bearing for long trouble free operation

## APPLICATIONS



Sprinkler, Drip and  
Open Irrigation



Fountains, Lawns  
and Gardens



Water supply in  
apartments & buildings

**SAMUDRA PUMPS (INDIA) PVT LTD**

Registered office: 1st Floor, Door No.737/2, Sai Aashrya, Puliyakulam Road, Coimbatore – 641 045, Tamilnadu, India

E-Mail: [info@samudrapumps.com](mailto:info@samudrapumps.com) | +91 422 498 2255